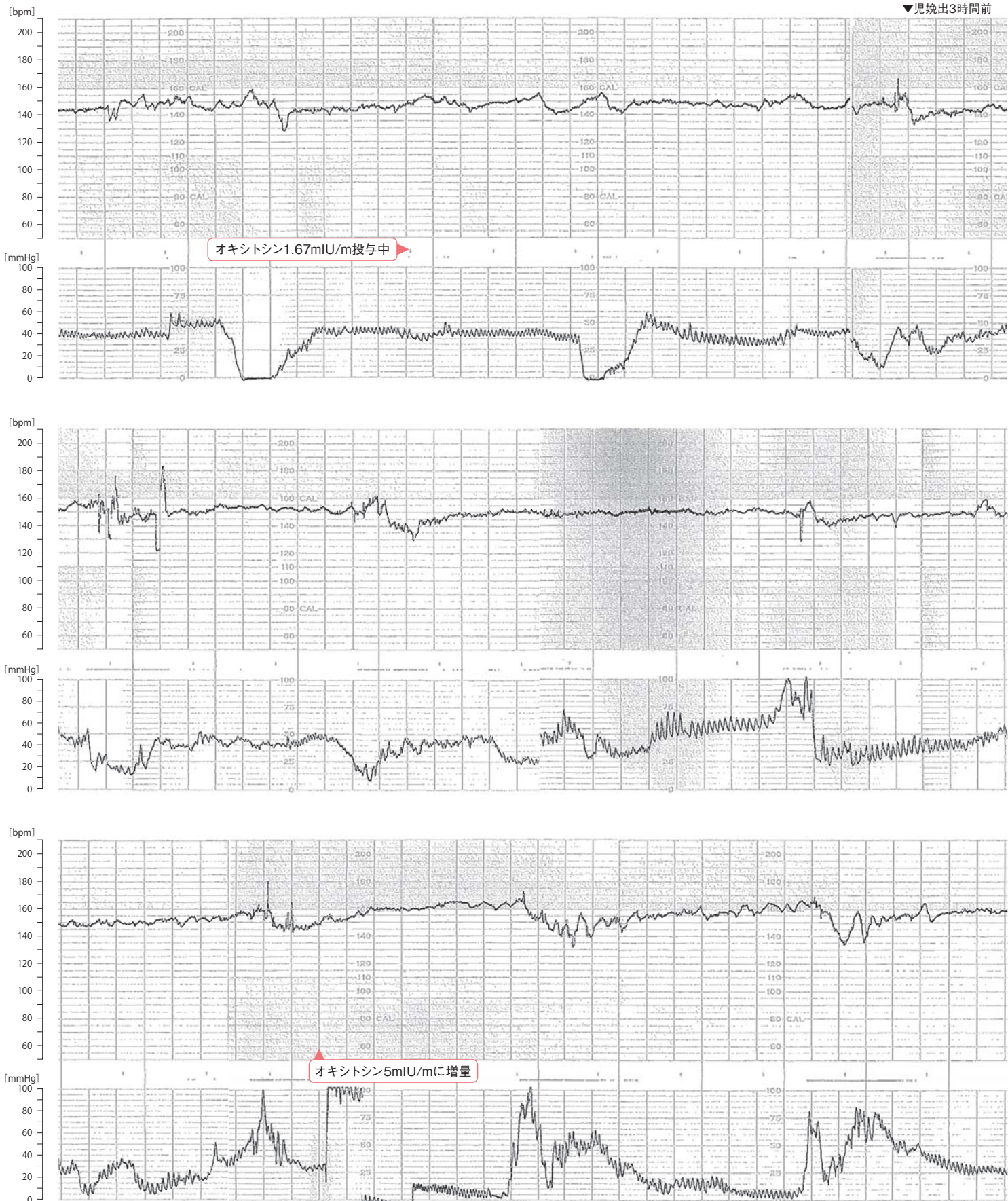


## 図4-11-2 子宮破裂を発症した事例①

事例の  
概要

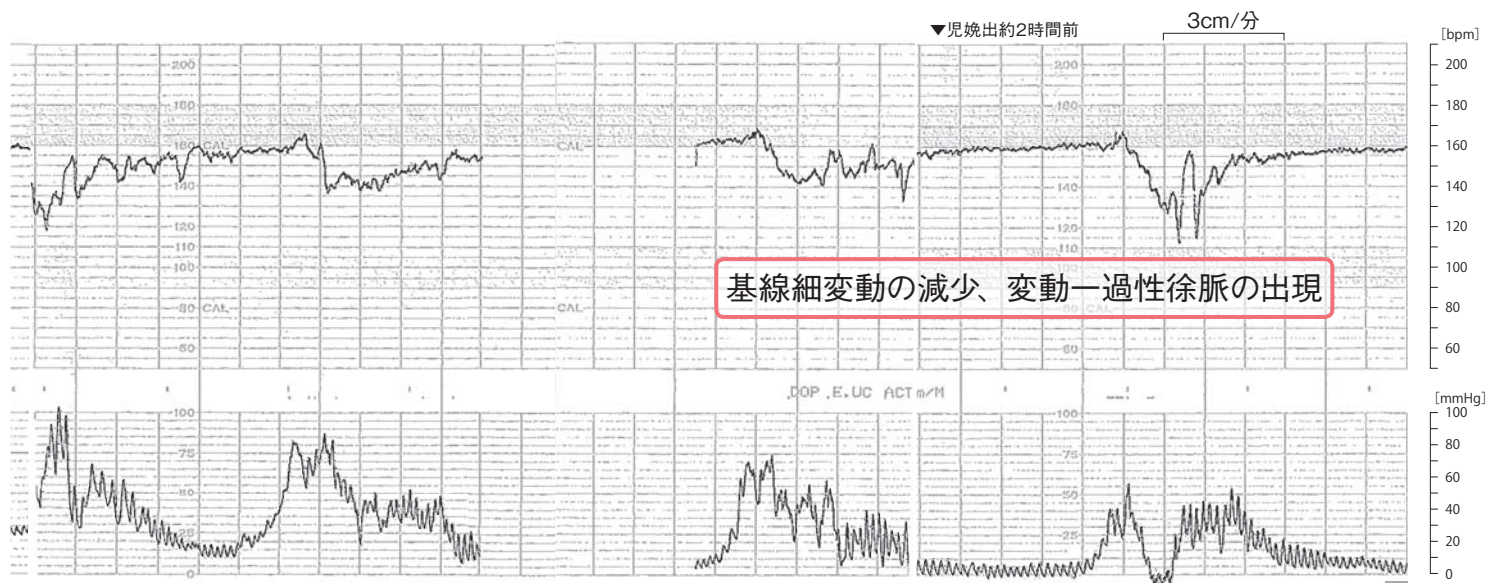
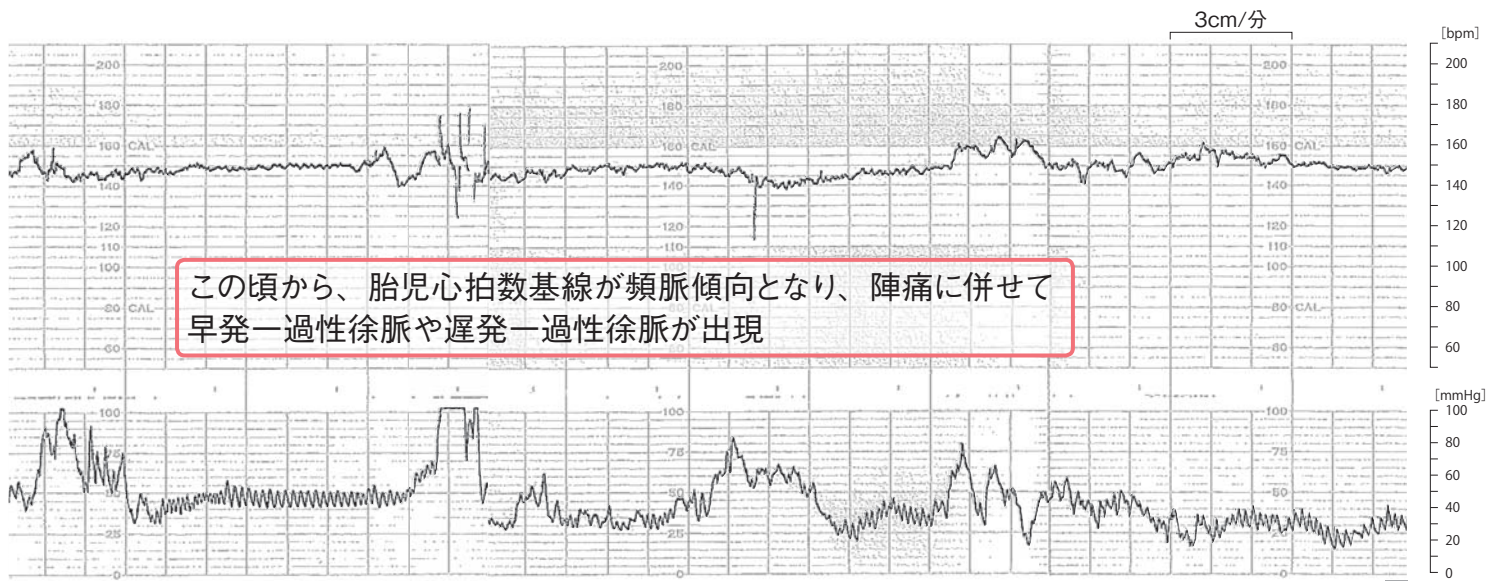
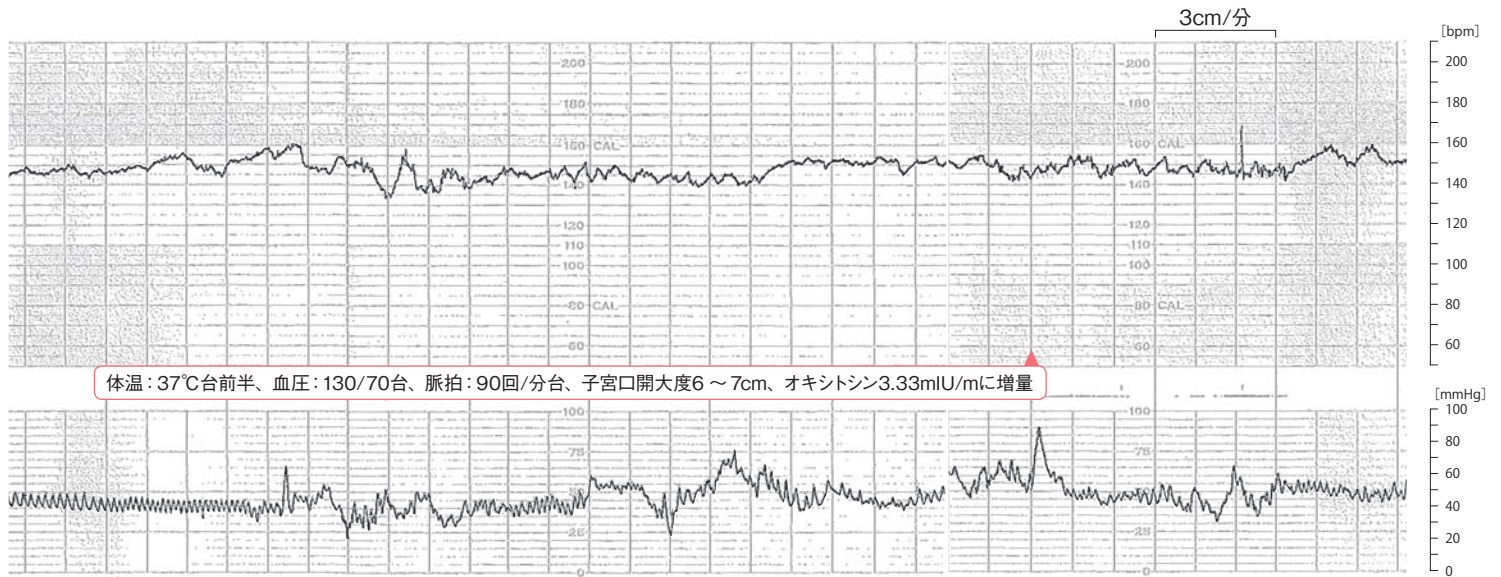
在胎週数40週、初産、子宮収縮薬投与、陣痛発来のため入院、  
入院時内診所見（子宮口開大度3cm、胎児先進部下降度-3）



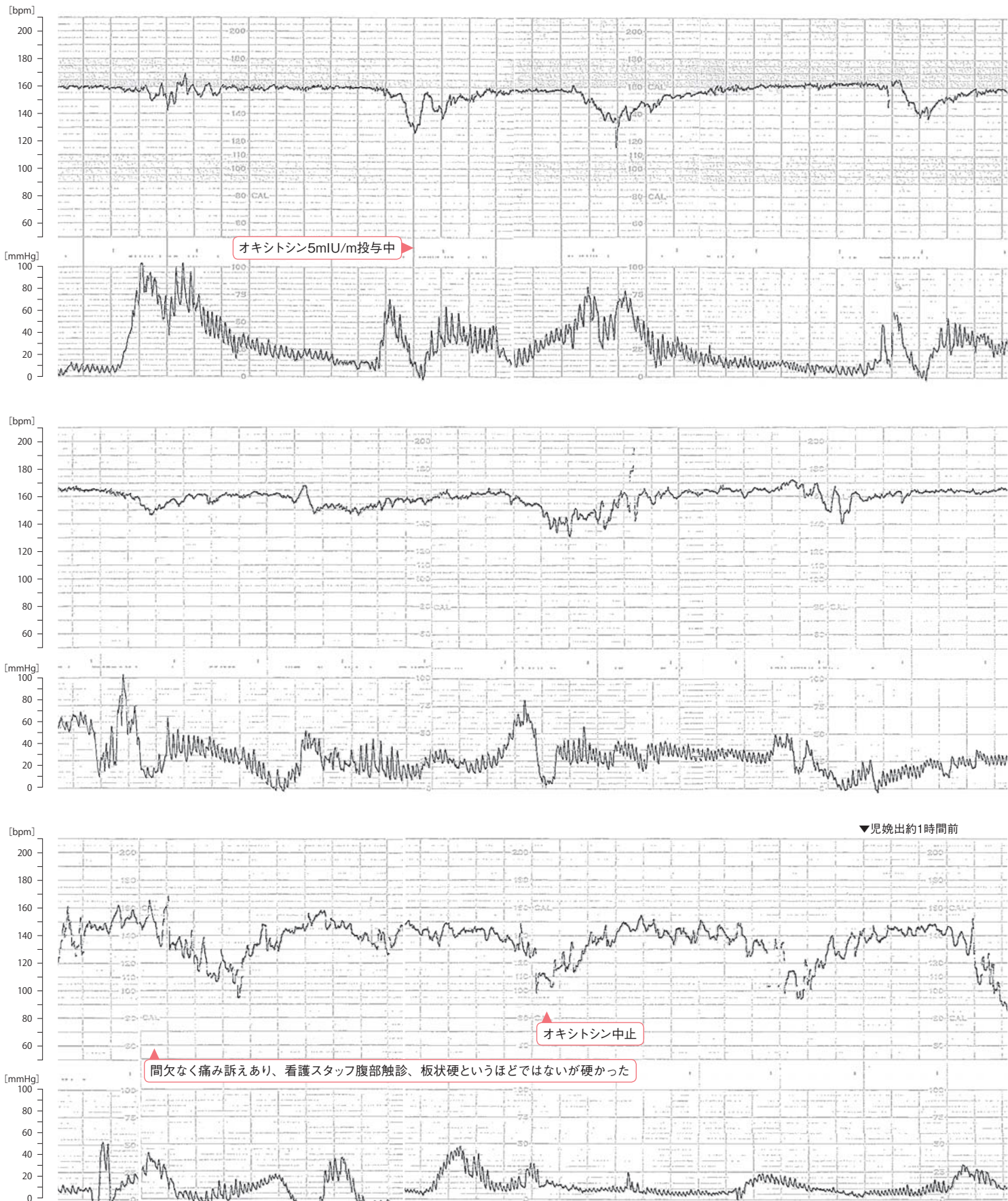


危険  
因子

- ・子宮収縮薬による分娩促進
- ・児の出生体重3500g以上



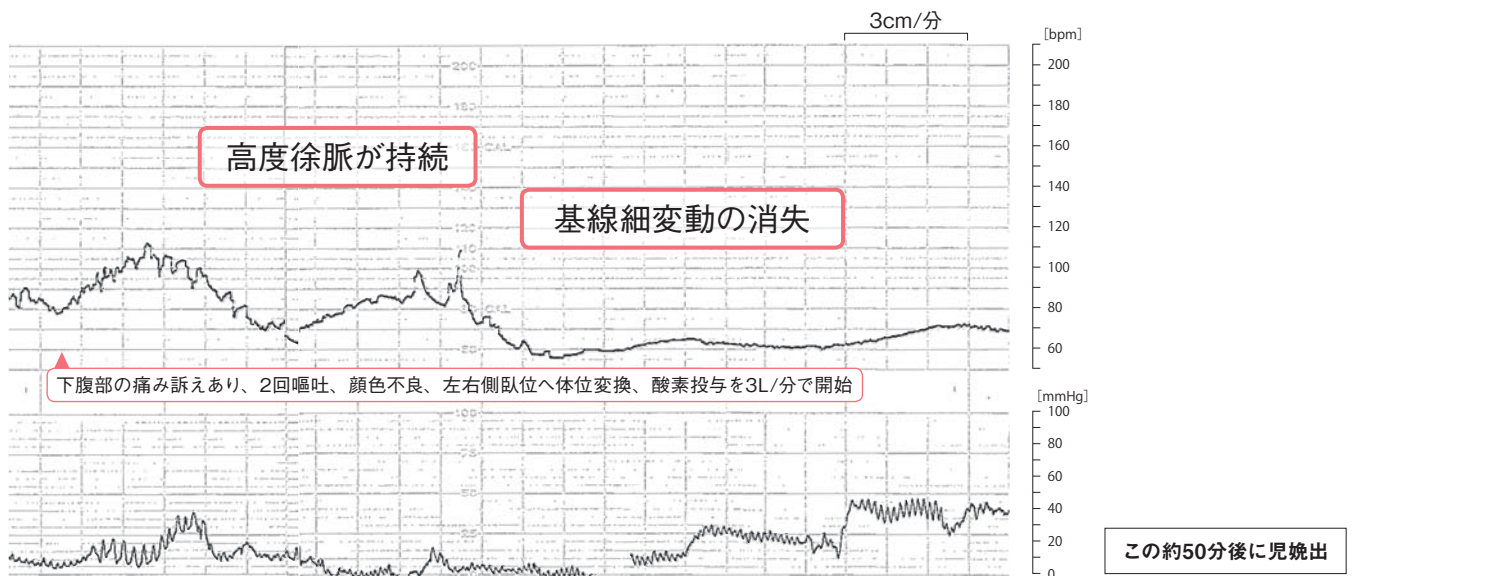
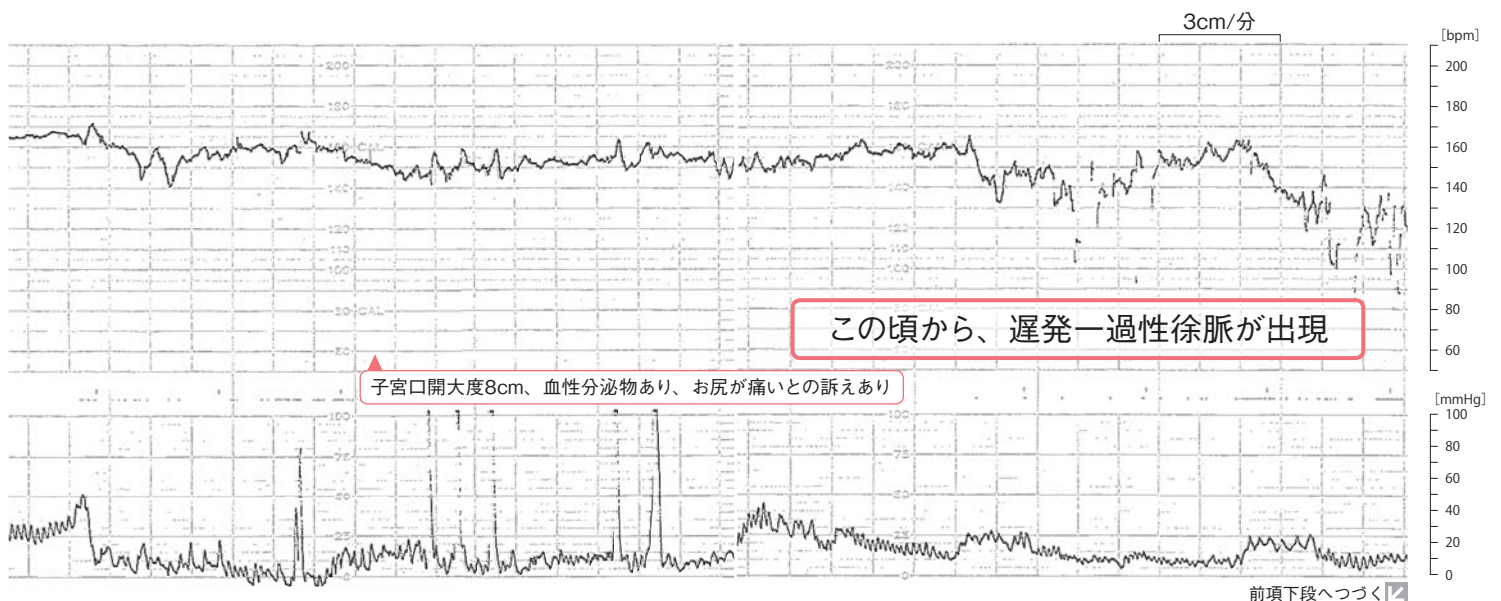
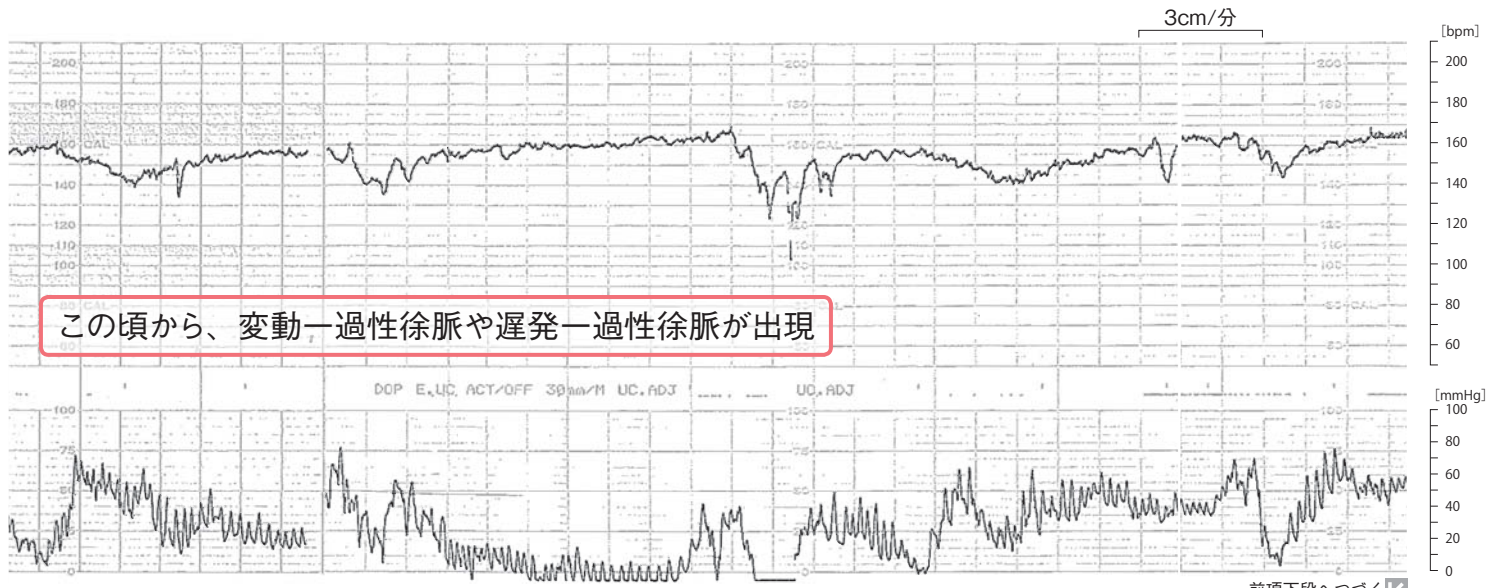






分娩  
情報

緊急帝王切開術、出生体重：3600g台、アプガースコア1分後1点/5分後2点、UApH・BE=実施なし

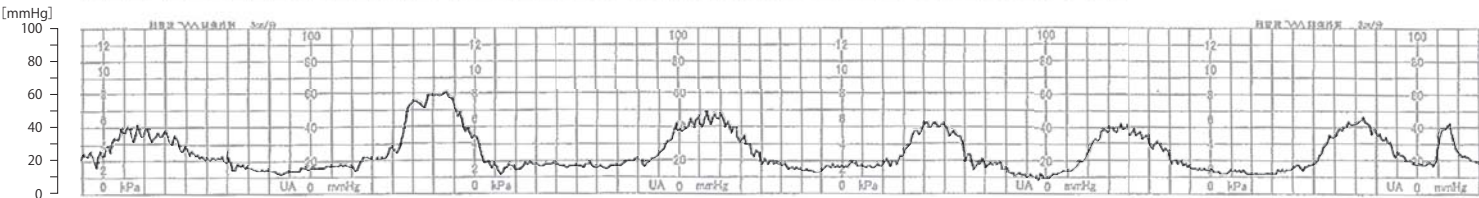
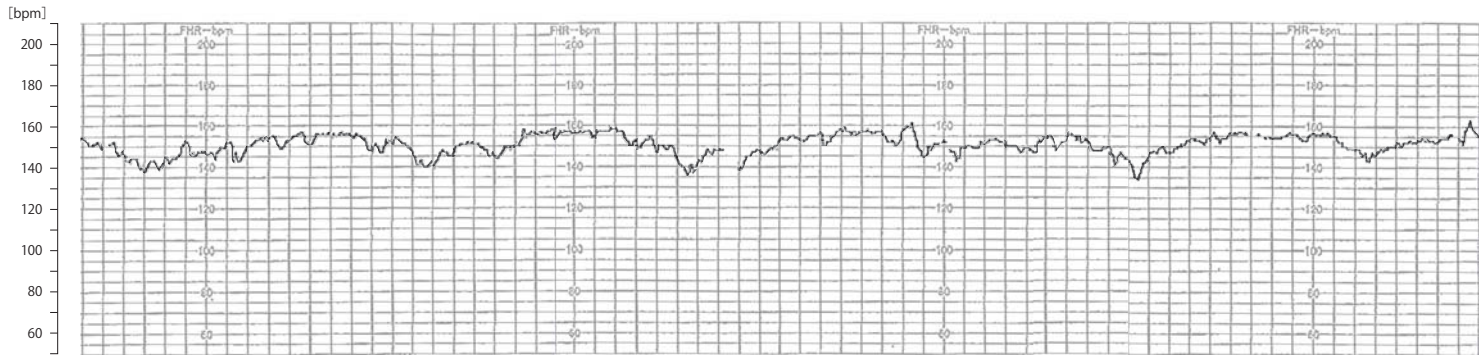
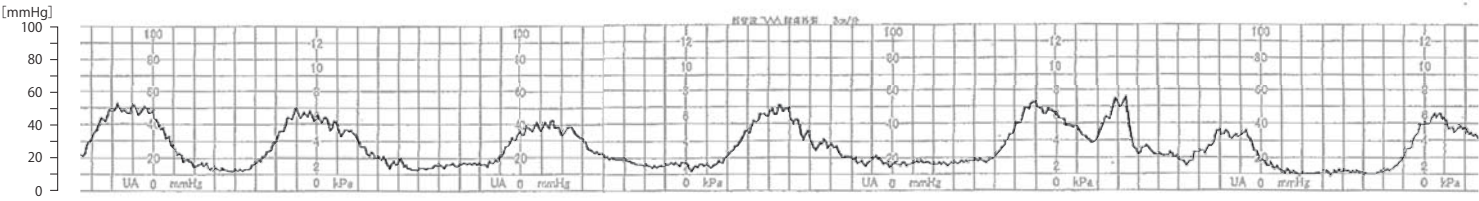
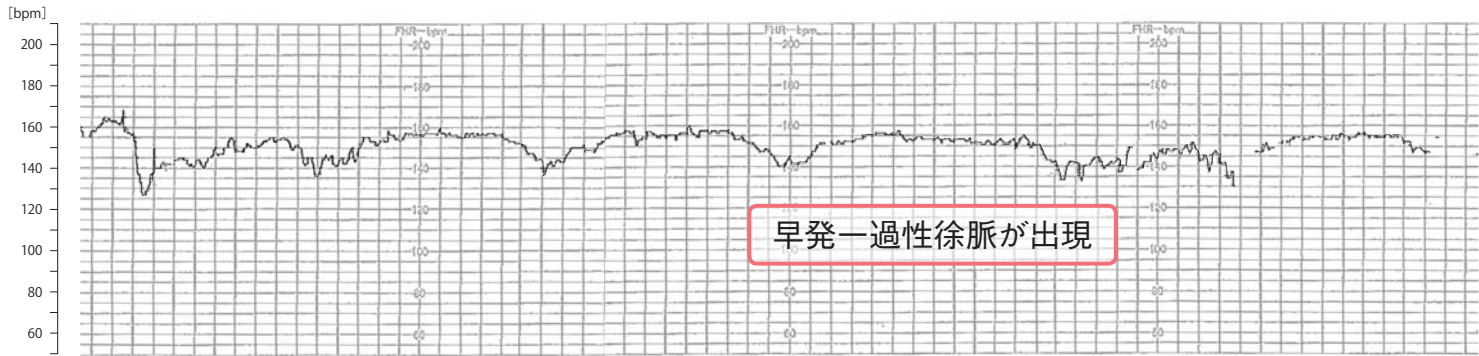
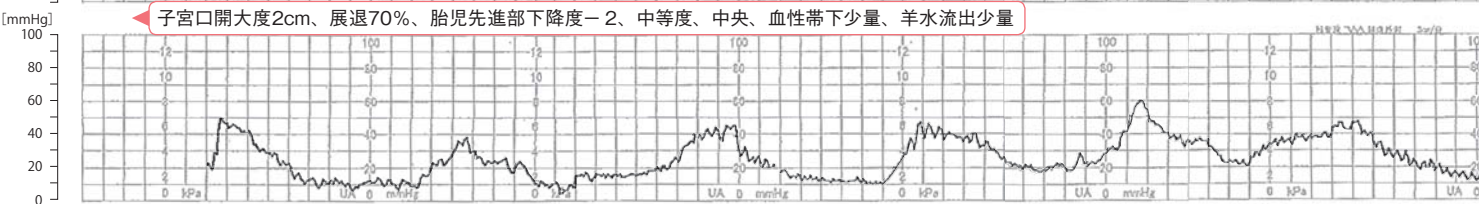
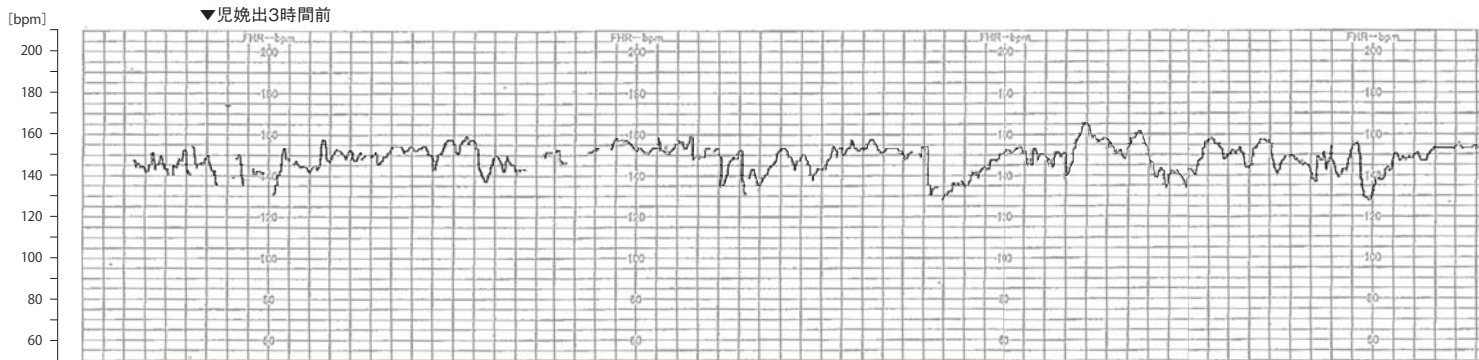




### 図4-11-3 子宮破裂を発症した事例②

事例の概要

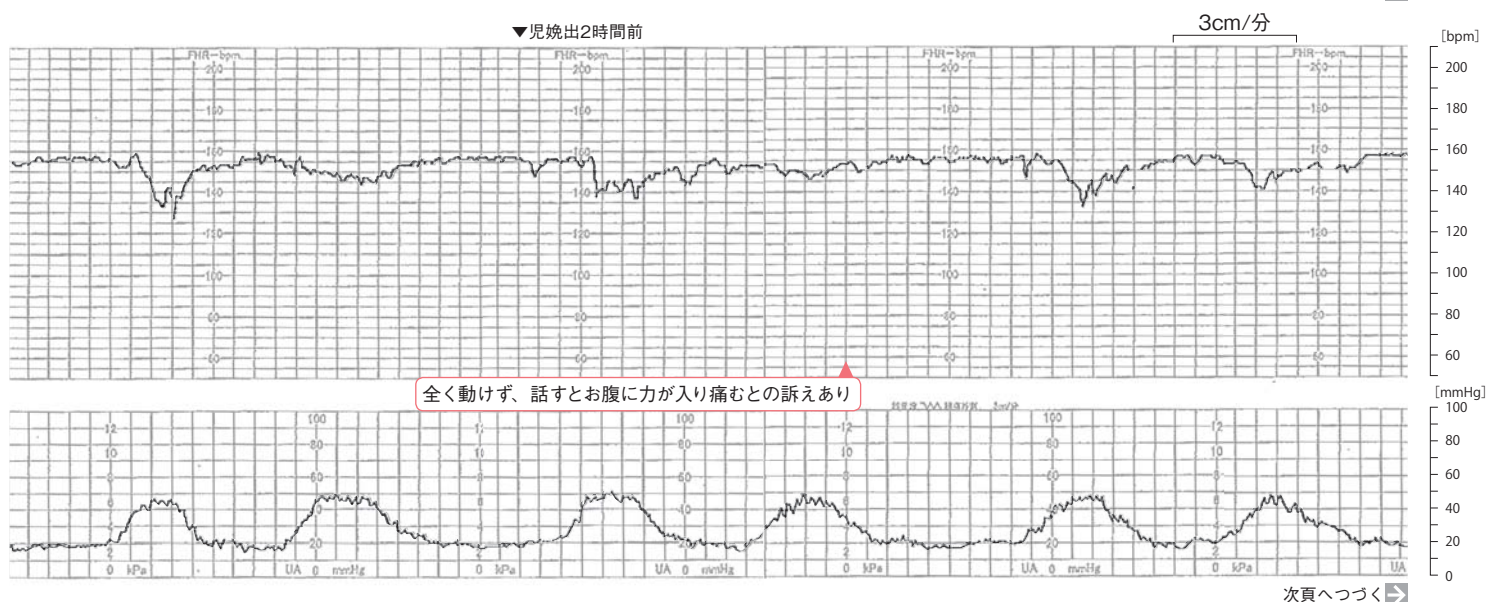
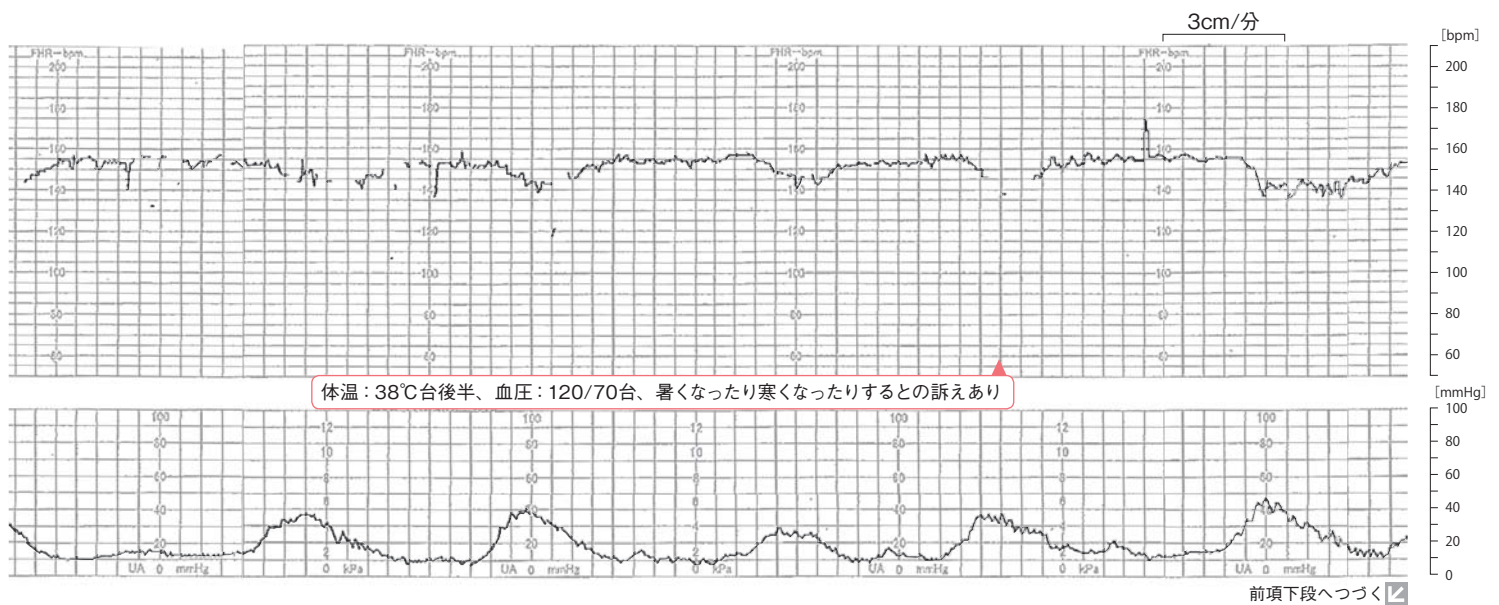
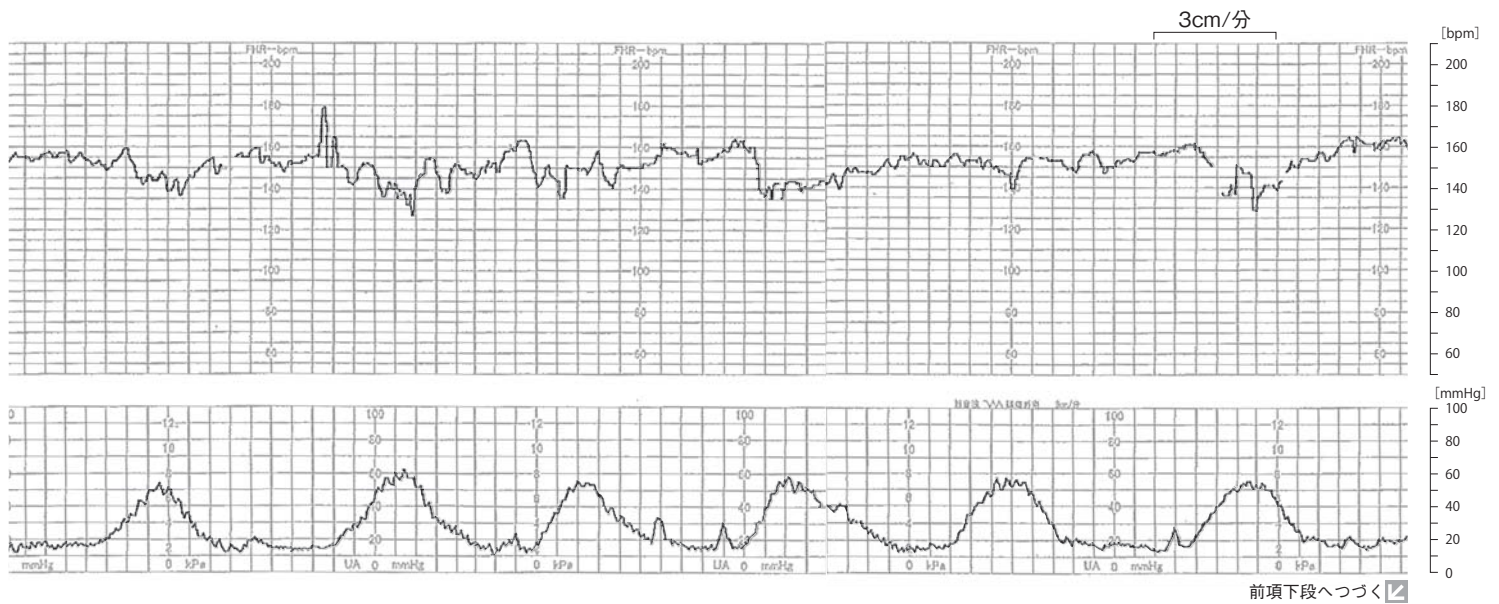
在胎週数39週、1回経産（前回：在胎週数38週、出生体重3000g台、骨盤位のため帝王切開術）、破水のため入院し、TOLACあり、入院時内診所見（子宮口開大度0cm、胎児先進部下降度-2）



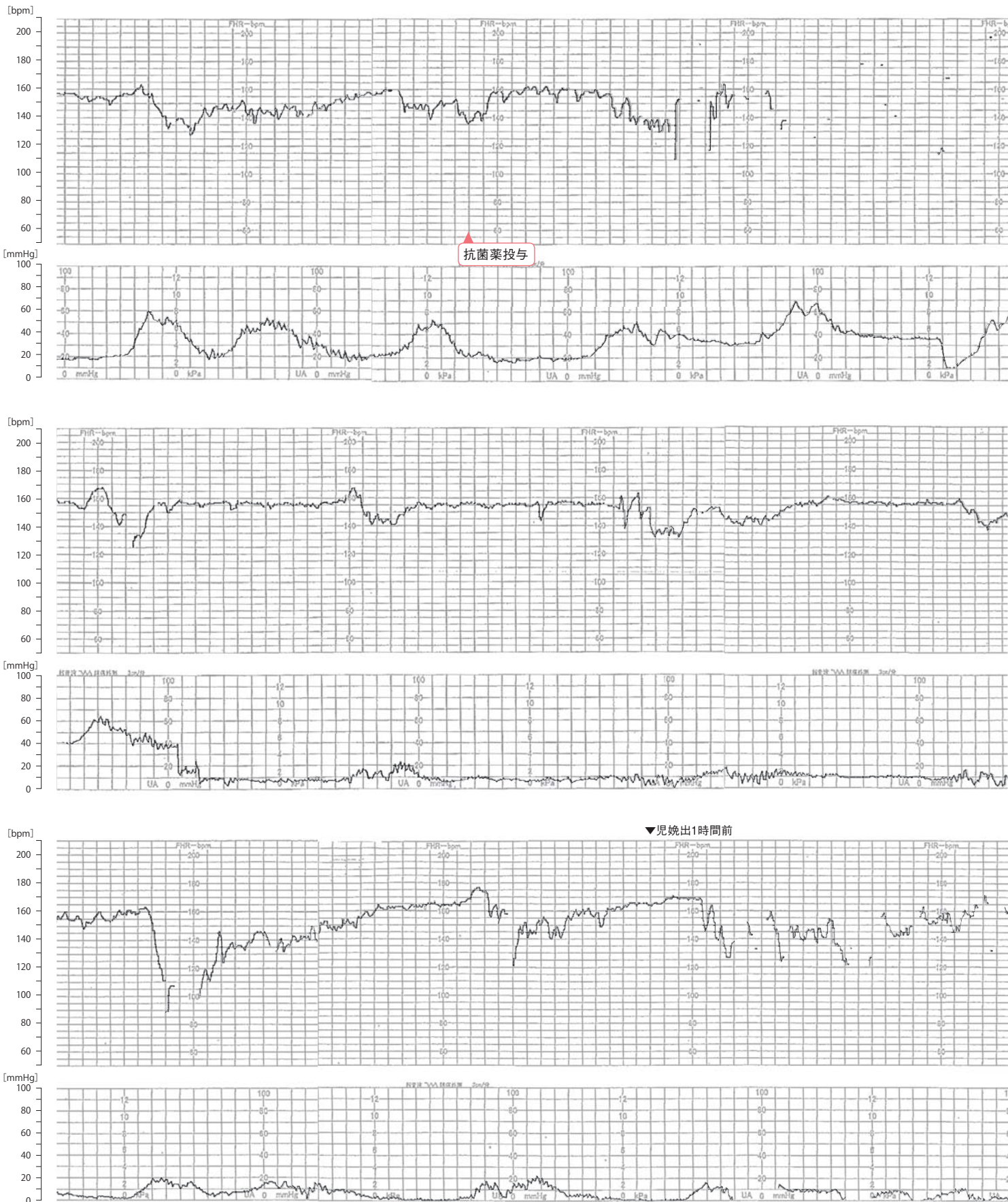


危険  
因子

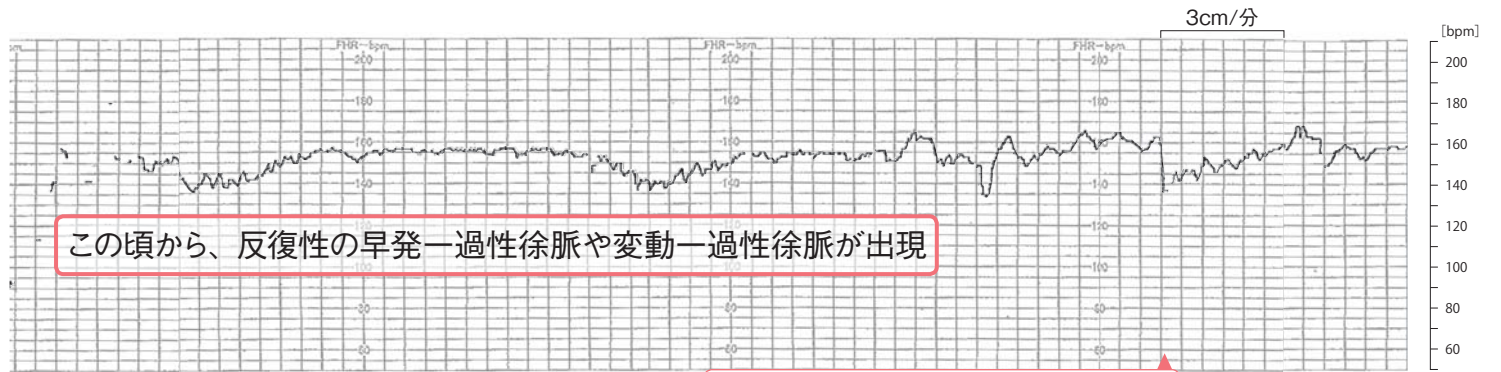
- ・帝王切開術既往
- ・TOLACあり



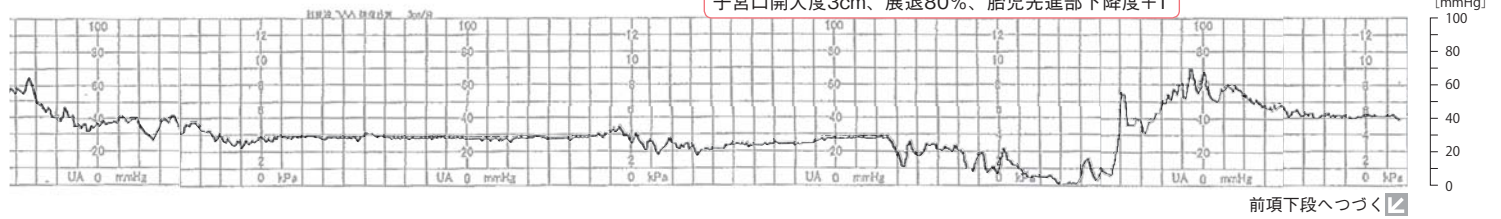




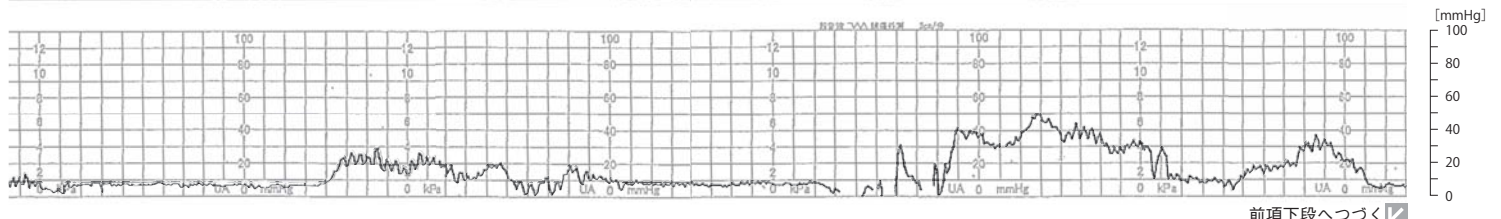
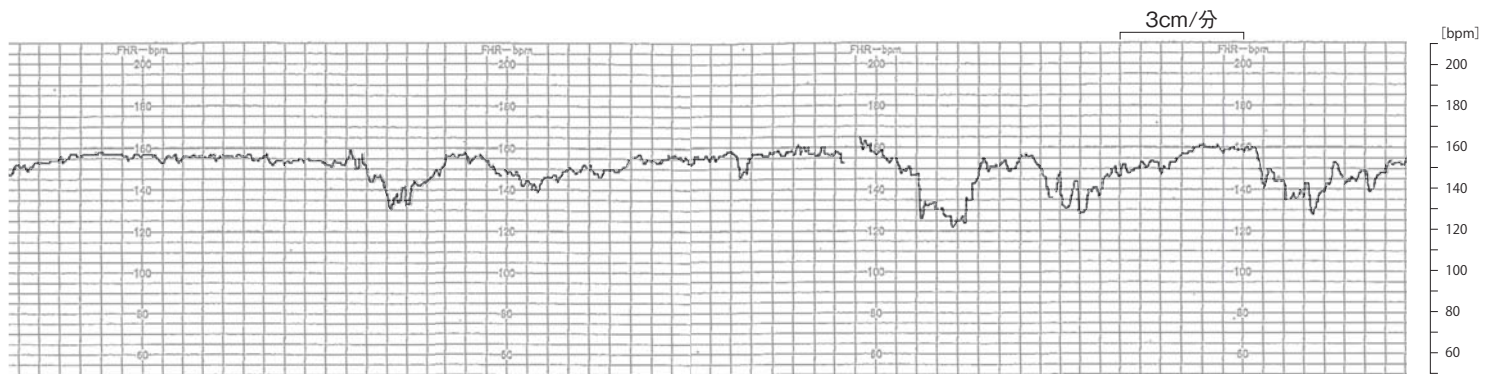




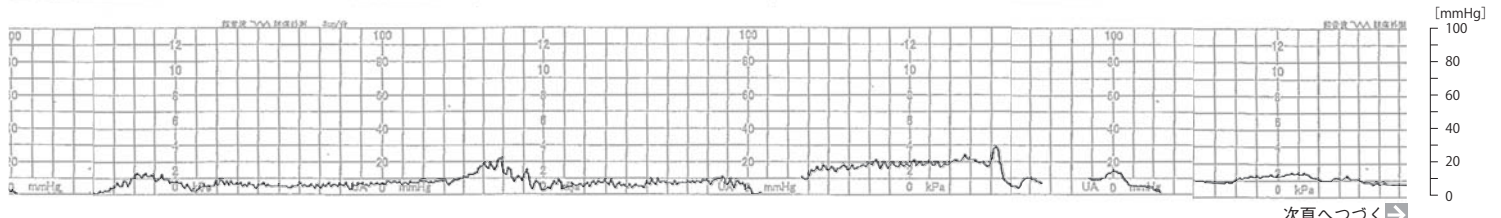
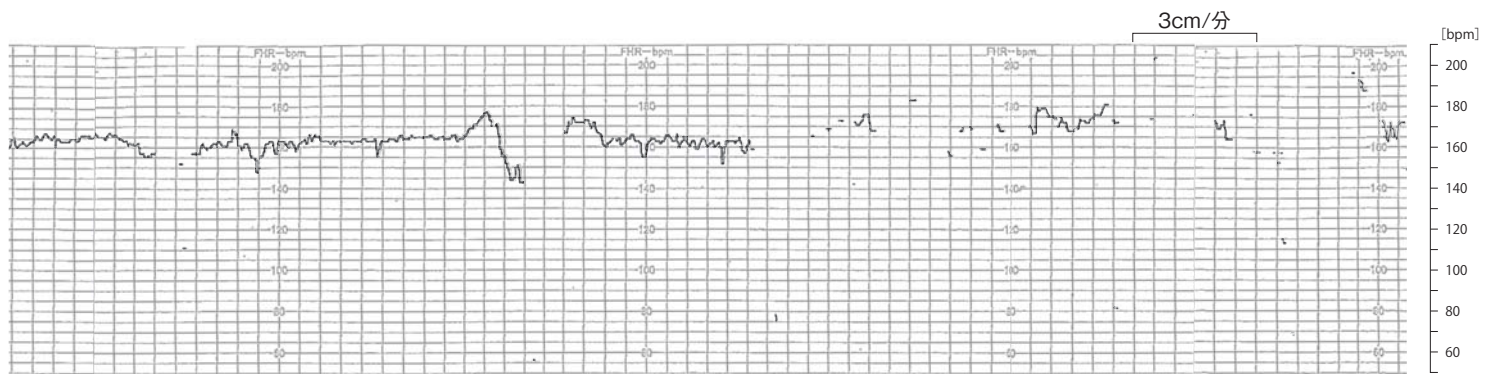
子宮口開大度3cm、展退80%、胎児先進部下降度+1



前項下段へつづく



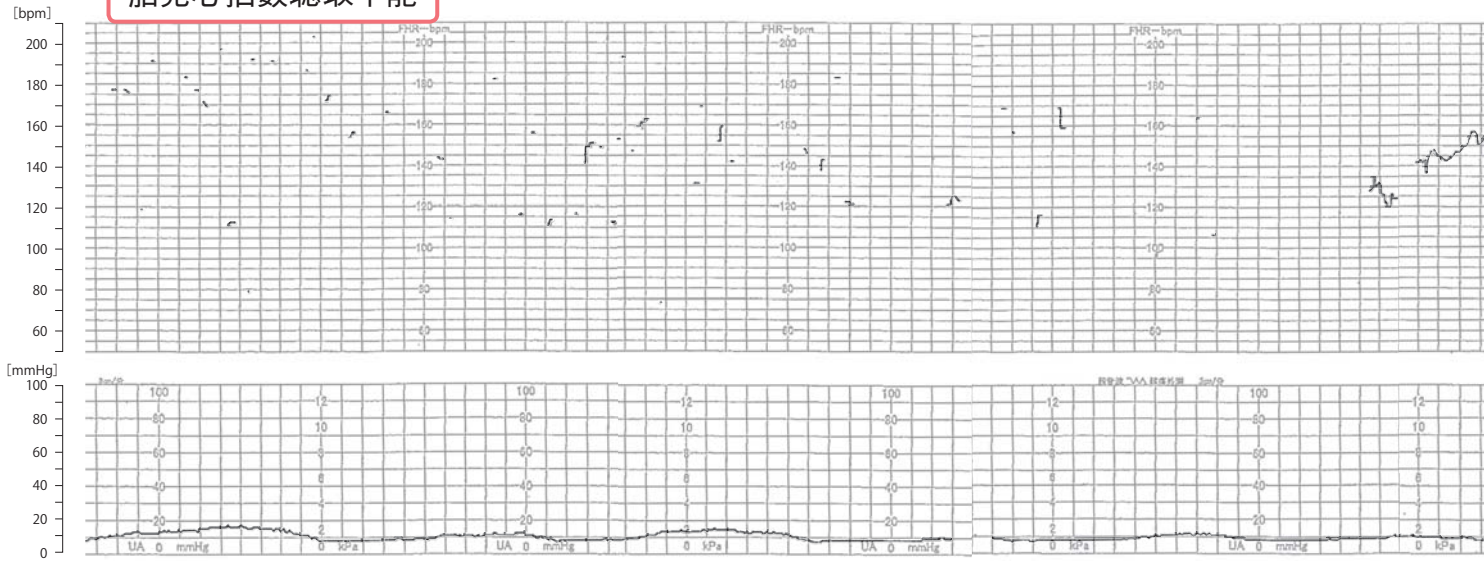
前項下段へつづく



次頁へつづく



胎児心拍数聴取不能





分娩  
情報

緊急帝王切開術、出生体重：3000g台、アプガースコア1分後1点/5分後4点、UApH=6.5台、BE=不明

